

PRICE PUMP CO.

21775 Eighth Street East  
 Sonoma, CA 95476 (707) 938-8441  
 707-FAX 938-0764

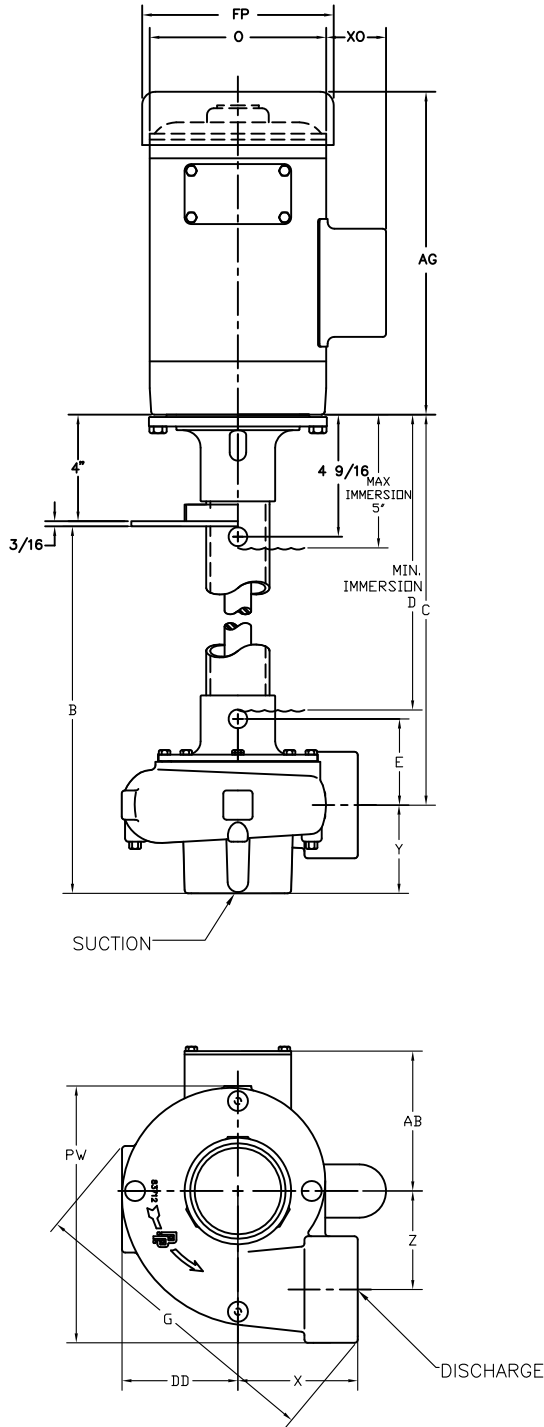
FACTORY FAX TRANSMITTAL DRAWING

REV. —

DATE 8/29/06

REF. NO. O-RCVSS

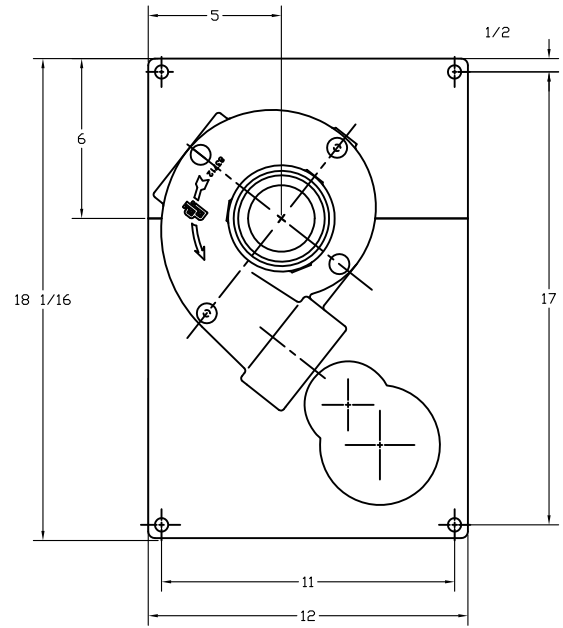
DESCRIPTION  
 RC200/300SS VERTICAL PUMP ASSEMBLY



MOTOR END DIMENSIONS							
HP	RPM	FRM	AG	FP	O	XO	AB
1/4	1800	56C	7 3/4				
1/3	1800	56C	8 1/4				
1/2	1800	56C	8 3/4				
1/3	3600	56C	8 1/2	6 1/8	5 3/8	2 1/16	4 1/2
1/2	3600	56C	8 3/4				
3/4	3600	56C	9 1/4				
1	3600	56C	9 3/4				
1 1/2	3600	56C	10 1/2				
2	3600	56C	11 1/8	7 3/16	6 7/8	2 1/4	5 1/4
3	3600	56C	12 3/8				
5	3600	184C	13 9/16	8 1/2	8 1/4		6 7/8

NOTE:  
 MOTOR DIMENSIONS WILL VARY BY MODEL AND MAKE,  
 DIMENSIONS ARE TO BE USED FOR REFERENCE ONLY.

	COLUMN DIMENSIONS				IMMERSION
	COLUMN	B	C	E	MIN. D
RC200-VSS	6.66	7	8 5/16	3 1/4	4 11/16
	13.00	13 5/16	14 5/8		11"
	20.00	20 5/16	21 5/8		18"
	32.00	32 5/16	33 5/8		30"
	44.00	44 5/16	45 5/8		42"
RC300-VSS	6.66	7 7/16	8 5/16	3 1/4	4 11/16
	13.00	13 3/4	14 5/8		11"
	20.00	20 3/4	21 5/8		18"
	32.00	32 3/4	33 5/8		30"
	44.00	44 3/4	45 5/8		42"



MOUNTING PLATE LAYOUT

	PUMP END DIMENSIONS						PIPE THREADS	
	G	DD	PW	X	Y	Z	SUCTION	DISCHG
RC200-V	8 3/4	3 1/2	7 1/8	3 3/4	2 7/8	2 1/2	2"	2"
RC300-V	11 1/2	4 3/8	9 3/16	4 1/2	3 5/16	3 3/4	3"	3"

NOTE: ALL DIMENSIONS ARE ROUNDED TO THE NEAREST 1/16 INCH.