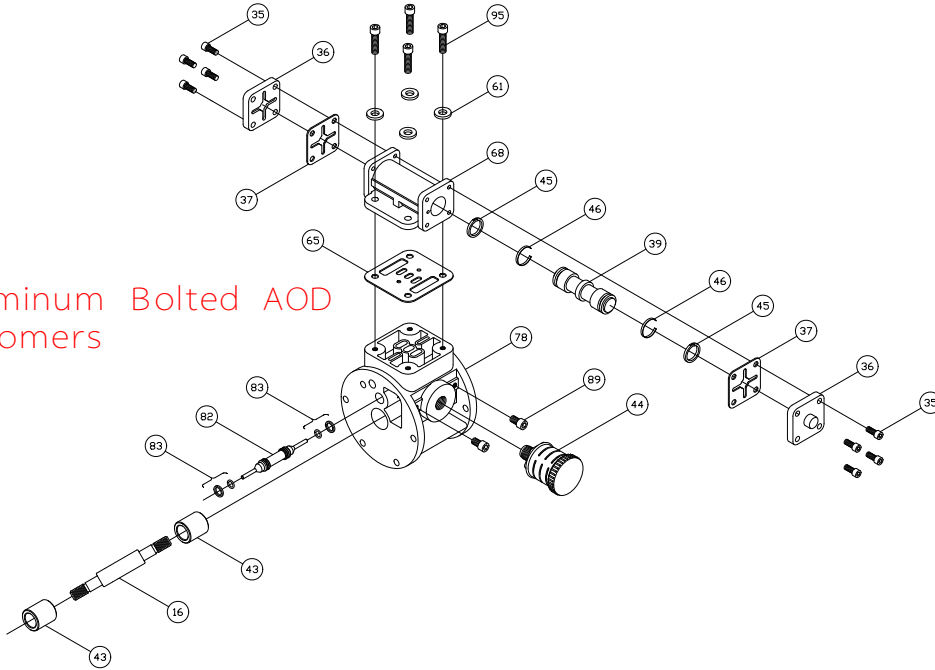


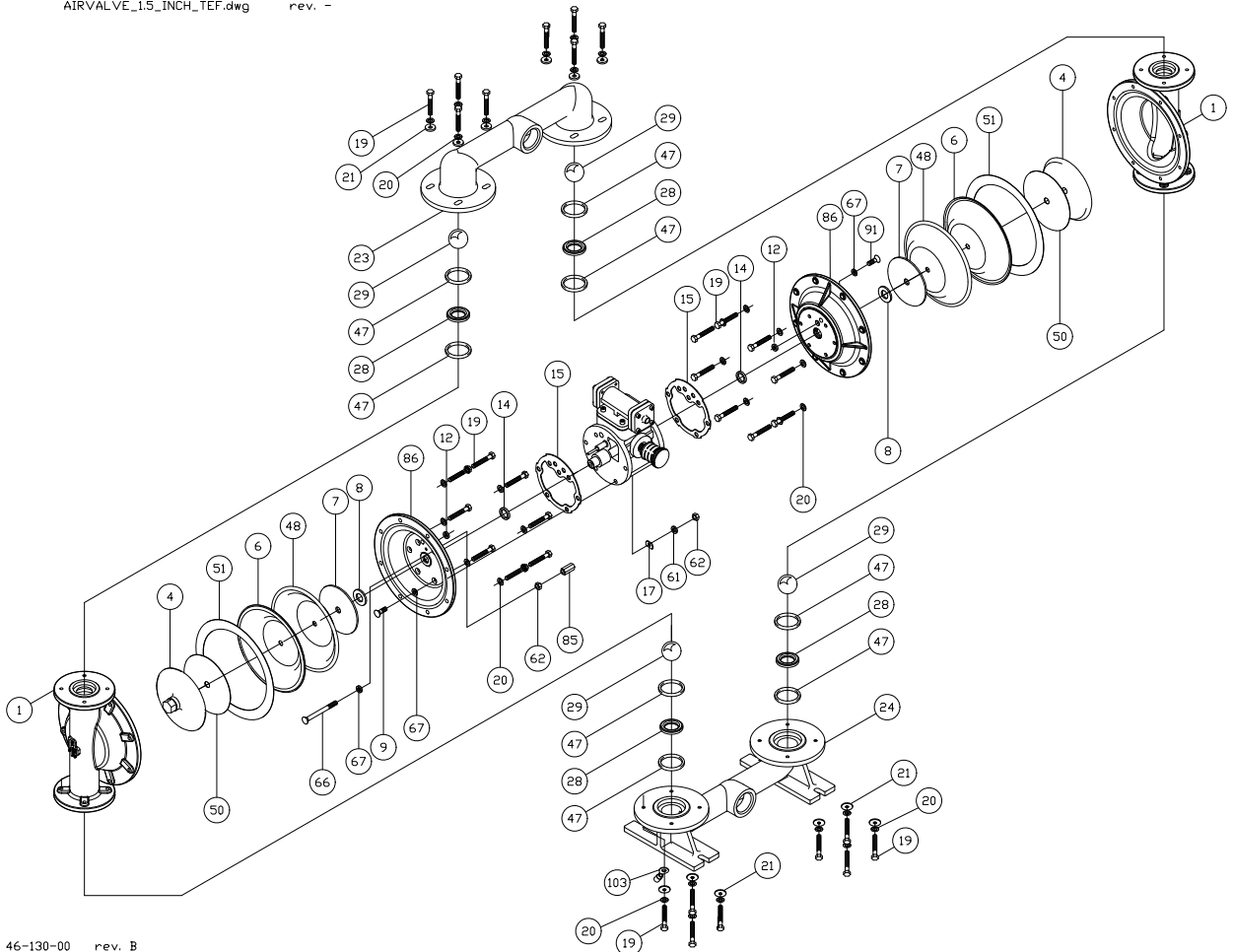


PRICE PUMP CO.

1 - 1/2" Aluminum Bolted AOD  
Teflon Elastomers



AIRVALVE\_1.5\_INCH\_TEF.dwg rev. -



46-130-00 rev. B

Price Pump Co.

21775 Eighth Street East \* Sonoma, CA 95476 \* Phone (707) 938-8441 \* Fax (707) 938-0764



# 1 1/2" AOD Bolted Aluminum Parts List

(Teflon Elastomers)

**PRICE® PUMP CO.**

AOD1.5BAL-Tplist.doc

Rev. B

| <b>Key #</b> | <b>Description</b>          | <b>Qty</b> | <b>Part #</b> | <b>Material</b>          |
|--------------|-----------------------------|------------|---------------|--------------------------|
| 1            | Chamber, Pump               | 2          | 47-122-56     | Aluminum                 |
| 2            | Lock Nut                    | 2          | 51-660-00     | Steel – Zinc Plated      |
| 4            | Plate, Diaphragm (Outer)    | 2          | 44-148-04     | Aluminum                 |
| 6            | Diaphragm                   | 2          | 44-150-50     | Teflon                   |
| 7            | Plate, Diaphragm (Inner)    | 2          | 46-852-00     | Stainless Steel          |
| 8            | Bumper                      | 2          | 44-151-00     | Polyurethane             |
| 9            | Cap Screw                   | 10         | 51-750-00     | Stainless Steel          |
| 12 +         | Seal                        | 2          | 44-431-00     | Molythane                |
| 14 +         | Seal                        | 2          | 44-432-00     | Molythane                |
| 15 +         | Gasket, Air Valve / Chamber | 2          | 46-564-00     | Rubber                   |
| 16           | Shaft, Pump                 | 1          | 46-478-00     | Steel - Nitrided         |
| 17           | “D” Flat Washer             | 10         | 47-370-00     | Stainless Steel          |
| 19           | Cap Screw, Hex Head         | 32         | 60-024-00     | Stainless Steel          |
| 20           | Lock Washer                 | 32         | 60-055-00     | Stainless Steel          |
| 21           | Washer                      | 16         | 52-128-43     | Stainless Steel          |
| 23           | Manifold, Discharge         | 1          | 47-120-56     | Aluminum                 |
| 24           | Manifold, Suction           | 1          | 47-121-56     | Aluminum                 |
| 28           | Seat, ball Valve            | 4          | 46-102-10     | Aluminum                 |
| 29           | Ball, Valve                 | 4          | 44-144-50     | Teflon                   |
| 35           | Cap Screw, Socket Head      | 8          | 51-640-00     | Steel – Zinc Plated      |
| 36           | Cap, Spool, Air Valve       | 2          | 45-743-40     | Aluminum                 |
| 37 +         | Gasket, Cap                 | 2          | 45-728-00     | Polyurethane 85 +/- Duro |
| 39 +         | Spool, Air Valve            | 1          | 47-196-00     | Phenolic                 |
| 43 +         | Sleeve, Bushing             | 2          | 44-186-00     | Bronze                   |
| 44 +         | Muffler                     | 1          | 44-284-66     | Polypropylene            |
| 45 +         | Piston Ring, Air Valve      | 2          | 44-427-00     | Phenolic                 |
| 46 +         | Ring, Expander, Air Valve   | 2          | 44-537-00     | Stainless Steel          |
| 47           | O-ring                      | 8          | 46-103-00     | Teflon                   |
| 48           | Diaphragm, Backup           | 2          | 46-197-10     | Buna                     |
| 50           | Diaguard                    | 2          | 46-105-00     | Teflon                   |
| 51           | Gortex Tape                 | 2          | 60-001-00     | Teflon                   |
| 61           | Lock Washer                 | 14         | 60-053-00     | Stainless Steel          |
| 62           | Hex Nut                     | 11         | 51-743-00     | Stainless – Zinc Plated  |
| 65 +         | Gasket, Air Valve / Spool   | 1          | 47-348-00     | Fiber                    |
| 66           | Flat SOC Cap                | 1          | 51-751-00     | Oxide Coated Steel       |
| 67           | O-ring                      | 12         | 47-351-00     | Buna                     |
| 68           | Housing, Spool              | 1          | 46-496-10     | Aluminum, Anodized       |
| 78           | Housing, Air Valve          | 1          | 46-495-10     | Cyglass                  |
| 82 +         | Pilot Spool, Air Valve      | 1          | 47-341-00     | Stainless Steel          |
| 83 +         | Spool Ring, Air Valve       | 2          | 47-463-00     | Buna / Phenolic          |
| 85           | Coupling Nut, Hex           | 1          | 46-533-00     | Steel – Zinc Plated      |
| 86           | Chamber, Air                | 2          | 47-344-04     | Aluminum                 |
| 89           | Cap Screw                   | 2          | 60-037-00     | Stainless Steel          |
| 91           | Cap Screw                   | 1          | 60-036-00     | Stainless Steel          |
| 95           | Cap Screw, Socket Head      | 4          | 51-749-00     | Stainless Steel          |
| 102          | Terminal Ring               | 1          | 60-070-00     | Tin                      |
| 103          | Terminal Ring               | 1          | 60-071-00     | Tin                      |
|              | Air Valve Rebuild Kit       |            |               |                          |
|              | -Includes all parts with +  | 1          | 47-664-00     |                          |
|              | Elastomer Kit               | 1          | 46-480-00     |                          |

Price® Pump Co.

21775 Eighth Street East \* Sonoma, CA 95476-0329 \* (707) 938-8441 \* Fax (707) 938-0764