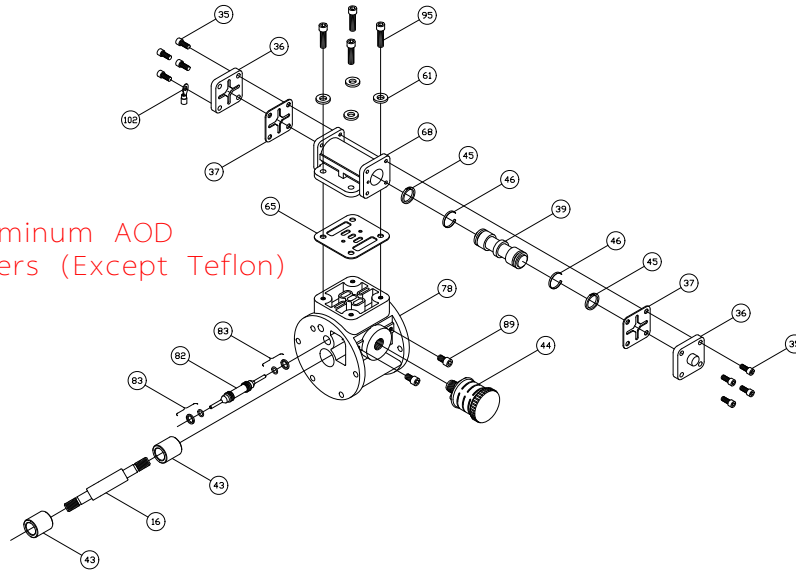




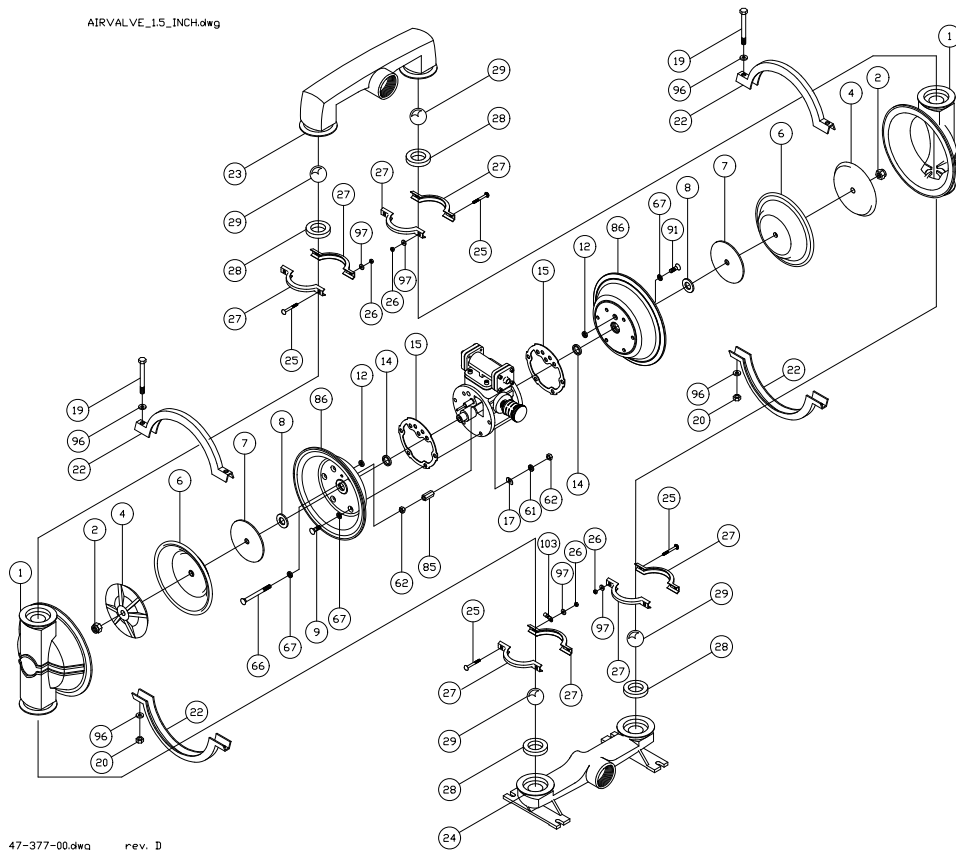
PRICE PUMP CO.

1.5AOD-AL.dwg rev. C

1 - 1/2" Aluminum AOD
All Elastomers (Except Teflon)



AIRVALVE_1.5_INCH.dwg



47-377-00.dwg rev. D

Price Pump Co.

21775 Eighth Street East * Sonoma, CA 95476-0329 * (707) 938-8441 * Fax (707) 938-0764



1 1/2" AOD Aluminum Parts List

(All Elastomers Except Teflon)

PRICE® PUMP CO.

AOD1.5ALplist.doc rev. D

Key #	Description	Quantity	Part #	Material
1	Chamber, Pump	2	44-138-04	Aluminum
2	Lock Nut	2	51-660-00	Steel – Zinc Plated
4	Plate, Diaphragm (Outer)	2	44-148-04	Aluminum
6	Diaphragm	2	44-150-**	Customers Preference
7	Plate, Diaphragm (Inner)	2	46-852-00	Steel – Plated
8	Bumper	2	44-151-00	Polyurethane
9	Cap Screw	10	51-750-00	Stainless Steel
12 +	Seal	2	44-431-00	Molythane
14 +	Seal	2	44-432-00	Molythane
15 +	Gasket, Air Valve / Chamber	2	46-564-00	Polyurethane
16	Shaft, Pump	1	44-152-00	Steel - Nitrided
17	“D” Flat Washer	10	47-370-00	Stainless Steel
19	Bolt, Hex	4	51-679-00	Stainless Steel
20	Hex Nut	4	60-061-SS	Stainless Steel
22	Clamp, Half	4	44-147-00	Steel – Zinc Plated
23	Manifold, Discharge	1	44-142-14	Aluminum
24	Manifold, Suction	1	44-143-04	Aluminum
25	Carriage Bolt	8	60-032-00	Stainless Steel
26	Hex Nut	8	60-059-00	Steel – Zinc Plated
27	Clamp, Half	8	44-946-00	Stainless Steel
28	Seat, ball Valve	4	44-145-**	Customer Preference
29	Ball, Valve	4	44-144-**	Customer Preference
35	Cap Screw, Socket Head	8	51-640-00	Steel – Zinc Plated
36	Cap, Spool, Air Valve	2	45-743-40	Aluminum
37 +	Gasket, Cap	2	45-728-00	Polyurethane
39 +	Spool, Air Valve	1	47-196-00	Phenolic
43 +	Sleeve, Bushing	2	44-186-00	Bronze
44 +	Muffler	1	44-284-66	Polypropylene
45 +	Piston Ring, Air Valve	2	44-427-00	Phenolic
46 +	Ring, Expander, Air Valve	2	44-537-00	Stainless Steel
61	Lock Washer	14	60-053-00	Stainless Steel
62	Hex Nut	11	51-743-00	Stainless – Zinc Plated
65 +	Gasket, Air Valve / Spool	1	47-348-00	Fiber
66	Flat SOC Cap	1	51-751-00	Oxide Coated Steel
67	O-ring	12	47-351-00	Buna
68	Housing, Spool	1	46-496-10	Aluminum, Anodized
78	Housing, Air Valve	1	46-495-10	Cyglass
82 +	Pilot Spool	1	47-341-00	Stainless Steel
83 +	Spool Ring Assembly, Air Valve	2	47-463-00	Buna / Phenolic
85	Coupling Nut, Hex	1	46-533-00	Steel – Zinc Plated
86	Chamber, Air	2	47-342-04	Aluminum
89	Cap Screw, Socket Head	2	60-037-00	Stainless Steel
91	Cap Screw	1	60-036-00	Stainless Steel
95	Cap Screw, Socket Head	4	51-749-00	Stainless Steel
96	Washer	8	52-128-43	Stainless Steel
97	Washer	8	60-051-00	Stainless Steel
102	Terminal Ring	1	60-070-00	Tin
103	Terminal Ring	1	60-071-00	Tin

Air Valve Rebuild Kit

-Includes all parts with + 1 47-664-00

Elastomer Kit 1 44-808-**

** Elastomers: 00 – Neoprene 20 – Viton 60 – Santoprene
 10 – Buna-N 30 – Nordel

Price® Pump Co.

21775 Eighth Street East * Sonoma, CA 95476-0329 * (707) 938-8441 * Fax (707) 938-0764