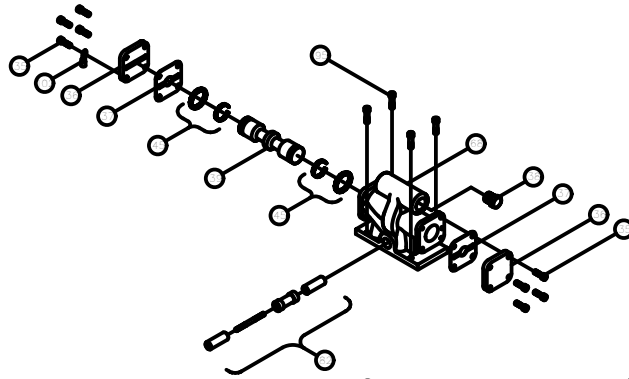




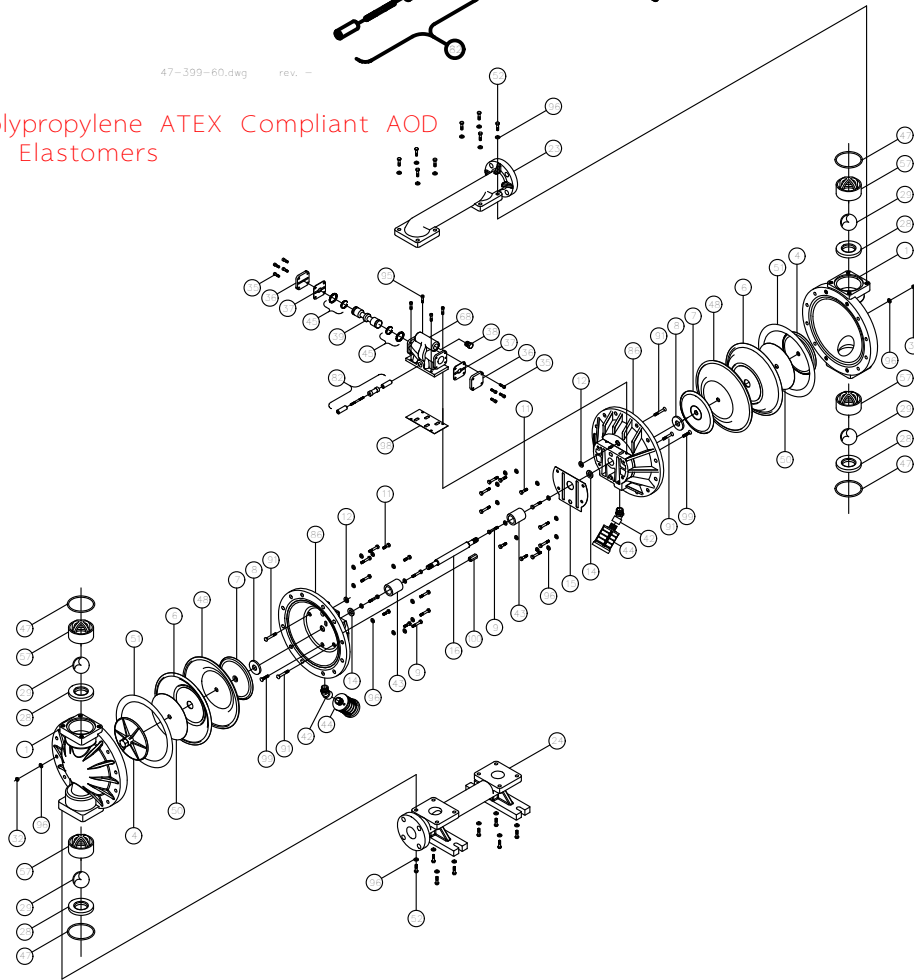
PRICE PUMP CO.

2AOD-Ptef-ATEX.dwg rev. -



47-399-60.dwg rev. -

2" Polypropylene ATEX Compliant AOD  
Teflon Elastomers



45-651-00.dwg rev. B

Price Pump Co.

21775 Eighth Street East \* Sonoma, CA 95476-0329 \* (707) 938-8441 \* Fax (707) 938-0764



# 2" AOD Polypropylene ATEX Compliant

(Teflon Elastomers)

**PRICE® PUMP CO.**

AOD2P-T-ATEXplst.doc rev. B

<b>Key #</b>	<b>Description</b>	<b>Quantity</b>	<b>Part #</b>	<b>Material</b>
1	Chamber, Pump	2	47-988-60	Polypropylene with Statkon
4	Plate, Diaphragm (Outer)	2	47-985-80	PVDF
6	Diaphragm	2	44-101-50	Teflon
7	Plate, Diaphragm (Inner)	2	48-663-00	Stainless Steel
8	Bumper	2	44-106-00	Polyurethane
9	Cap Screw	16	3085	Stainless Steel
11	Cap Screw	8	60-024-00	Stainless Steel
12 +	Seal	2	46-060-00	Molythane
14 +	Seal	2	44-372-00	Molythane
15 +	Gasket, Air Valve / Chamber	1	48-636-00	Santoprene
16	Shaft, Pump	1	46-175-00	Steel – Nitrided
23	Manifold, Discharge	1	47-986-60	Polypropylene with Statkon
24	Manifold, Suction	1	47-987-60	Polypropylene with Statkon
28	Seat, ball Valve	4	47-983-50	Teflon
29	Ball Valve	4	44-102-50	Teflon
32	Hex, Nut	16	60-061-00	Steel – Zinc Plated
35	Cap Screw, Socket Head	8	51-640-00	Stainless Steel
36	Cap, Spool, Air Valve	2	46-217-40	Aluminum
37 +	Gasket, Cap	2	46-218-00	Polyurethane
38	Pipe Plug	1	60-056-00	Stainless Steel
39 +	Spool, Air Valve	1	47-180-00	Phenolic
42	Elbow	2	44-129-00	Polypropylene
43 +	Sleeve, Bushing	2	44-120-00	Bronze
44 +	Muffler	2	44-127-66	Polypropylene
45 +	Piston Ring w/ Expander	2	44-366-00	Phenolic / Stainless Steel
47	O-ring	4	46-182-00	Teflon Encapsulated Viton
48	Backup Diaphragm	2	46-233-10	Buna
50	Diagaurd	2	45-503-00	Teflon
51	Gortex Tape	2	60-001-00	Teflon
52	Cap Screw	16	60-024-00	Stainless Steel
57	Cage, Ball Valve	4	47-991-00	Polypropylene
68	Housing, Spool	1	47-996-10	Stainless Steel
82 +	Pilot Spool, Air Valve	1	47-587-00	Phenolic / Stainless
86	Chamber, Air	2	47-995-60	Polypropylene with Statkon
91	Cap Screw	4	48-946-00	Alloy – Zinc Plated
95	Cap Screw, Socket Head	4	48-950-00	Stainless Steel
96	Flat Washer	56	49-015-00	Stainless Steel
98 +	Gasket, Spool Housing	1	48-967-00	Santoprene
99	Capscrew, Flat Socket Head	2	49-018-00	Alloy – Zinc Plated
100	Coupling Nut	1	49-017-00	Steel – Zinc Plated
102	Terminal Ring	1	60-070-00	Tin
	Air Valve Rebuild Kit			
	-Includes All Parts with +	1	48-620-00	
	Elastomer Kit	1	49-051-55	

Price® Pump Co.

21775 Eighth Street East \* Sonoma, CA 95476-0329 \* (707) 938-8441 \* Fax (707) 938-0764