



# PRICE PUMP®

## BASE PLATE

### SPECIFICATIONS

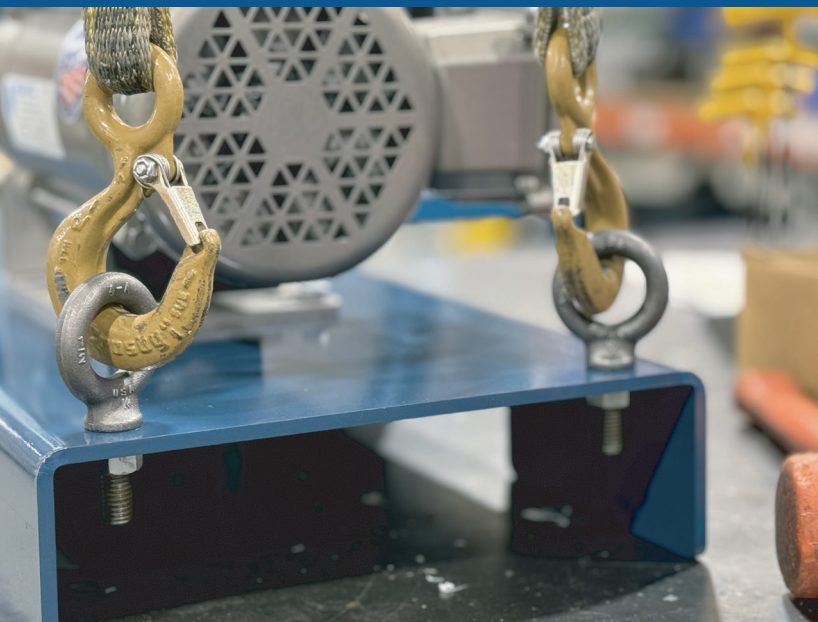
DESIGNED TO ACCOMMODATE ALL PRICE PUMP CLOSE-COUPLED MODELS 7 1/2 HP AND SMALLER

CONSTRUCTED OF HIGH STRENGTH STEEL COATED WITH TOP OF THE LINE, CORROSION RESISTANT PAINT

LASER ETCHED IDENTIFICATION BADGE FOR LIFETIME VISIBILITY OF THE PUMP MODEL INFORMATION

ABLE TO ACCOMMODATE BOTH FOOTED AND FOOTLESS MOTORS

SHIPS WITH OUR INDUSTRY LEADING 7-10 BUSINESS DAY LEAD TIME. EXPEDITING OPTIONS ARE AVAILABLE.



### BENEFITS

EASY ACCESS SLOTS ON BOTH SIDES FOR FORKLIFT LIFTING

ADDITIONAL THROUGH-HOLES IN THE CORNERS FOR INSTALLING 1/2" EYE BOLTS FOR CRANE USE

ALLOWS FOR QUICK SERVICING IN TOUGH APPLICATIONS AND SKIDS

LIGHTWEIGHT AND ROBUST DESIGN FOR EASY HANDLING WITHIN YOUR FACILITY

CAN BE GROUTED INTO PLACE TO PROVIDE A RIGID AND STABLE LOCATION FOR PRECISION PUMPING APPLICATIONS

FOR ALL OF OUR CURRENT OFFERINGS AND LOCAL REPRESENTATIVES  
PLEASE VISIT [WWW.PRICEPUMP.COM](http://WWW.PRICEPUMP.COM)



2203 SMEED PARKWAY CALDWELL, ID 83605

MAIN  
(208) 402-6871

TOLL FREE  
(800) 345-7867

EMAIL  
[SALES@PRICEPUMP.COM](mailto:SALES@PRICEPUMP.COM)

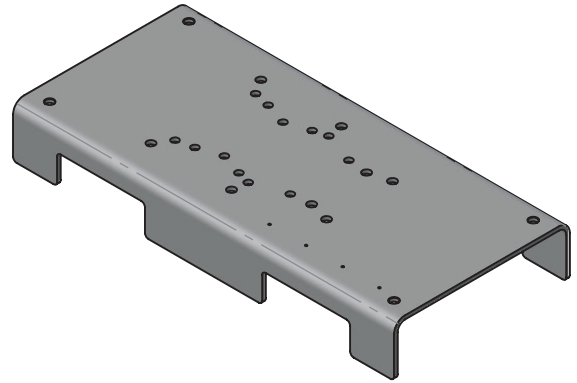
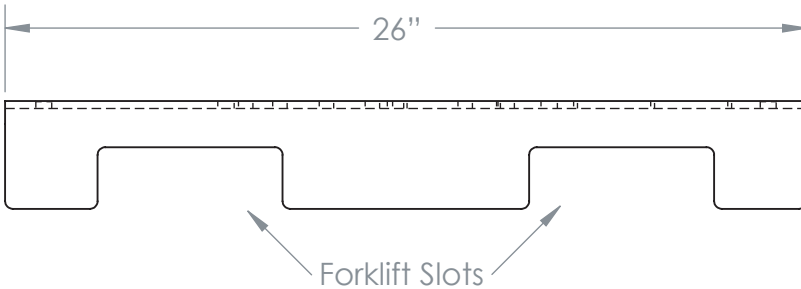
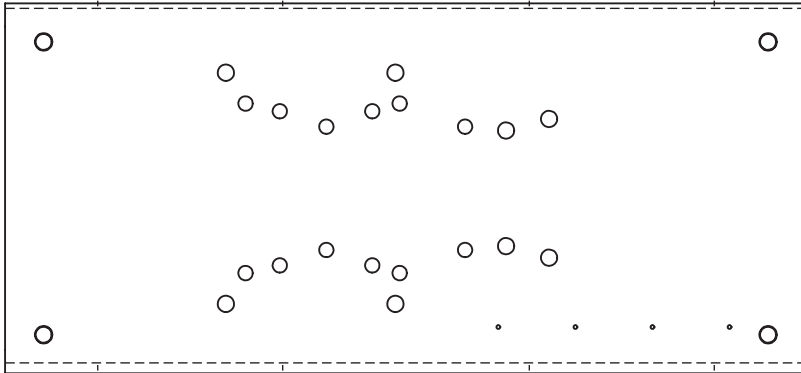
[PRICEPUMP.COM](http://PRICEPUMP.COM)



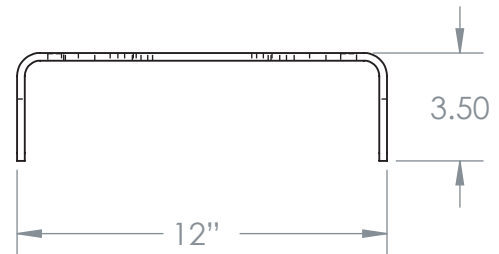


# PRICE PUMP®

## BASE PLATE



Weight: 30 lbs.



## DIMENSIONS

ENVELOPE SIZE											
MODEL	MOTOR HP	MOTOR #	LENGTH	WIDTH	HEIGHT	MODEL	MOTOR HP	MOTOR #	LENGTH	WIDTH	HEIGHT
CD100	5	1655	26"	12.875"	8.0"	2MS50	1/4	1317	26"	12"	7.25"
CD150	5	1655	26"	12.875"	8.25"	3MS50	5	1655	26.5"	12.875"	8.25"
CL150	7.5	3763	26"	12.875"	8.375"	4MS50	1/2	1638	26"	12.25"	7.875"
RC200	5	1655	26"	12.875"	8.25"	5MS50	5	1655	26.5"	12.875"	8.25"
RC300	5	1655	26"	12.875"	9"	6MS50	5	1655	26.5"	12.875"	8.25"
RC300	7.5	3763	26"	12.875"	9"	HP75	3	3310	26"	12"	9.25"
SP150	3	1263	26"	12"	9.5"	HP100	3	1348	26"	12"	9.25"
XT100	7.5	1388	26"	12.875"	11"	OH75	3	1263	26"	12"	9"
XT150	7.5	1388	26"	12.75"	8.75"	RP75	3	1263	26"	12"	8"
XT200	7.5	1389	27.5"	13.25"	9"	2MS75MD	5	1655	26"	12.875"	8.375"
XL100	7.5	1389	27.5"	13.25"	11"	CL150MD	5	1655	26"	12.875"	8.375"
XL150	7.5	1389	27.5"	13.25"	11"	XL150MD	7.5	1388	27"	12.75"	11"
XL200	7.5	1388	26"	13.25"	12.75"	XT200MD	5	1655	26"	12.875"	9"

ALL NUMBERS ARE APPROXIMATIONS ROUNDED TO THE NEAREST 1/8"



2203 SMEED PARKWAY CALDWELL, ID 83605

MAIN  
(208) 402-6871

TOLL FREE  
(800) 345-7867

EMAIL  
SALES@PRICEPUMP.COM

PRICEPUMP.COM

