

DESCRIPTION

RC200/300 CLOSE COUPLED MOTOR PUMP ASSY

REF. NO.

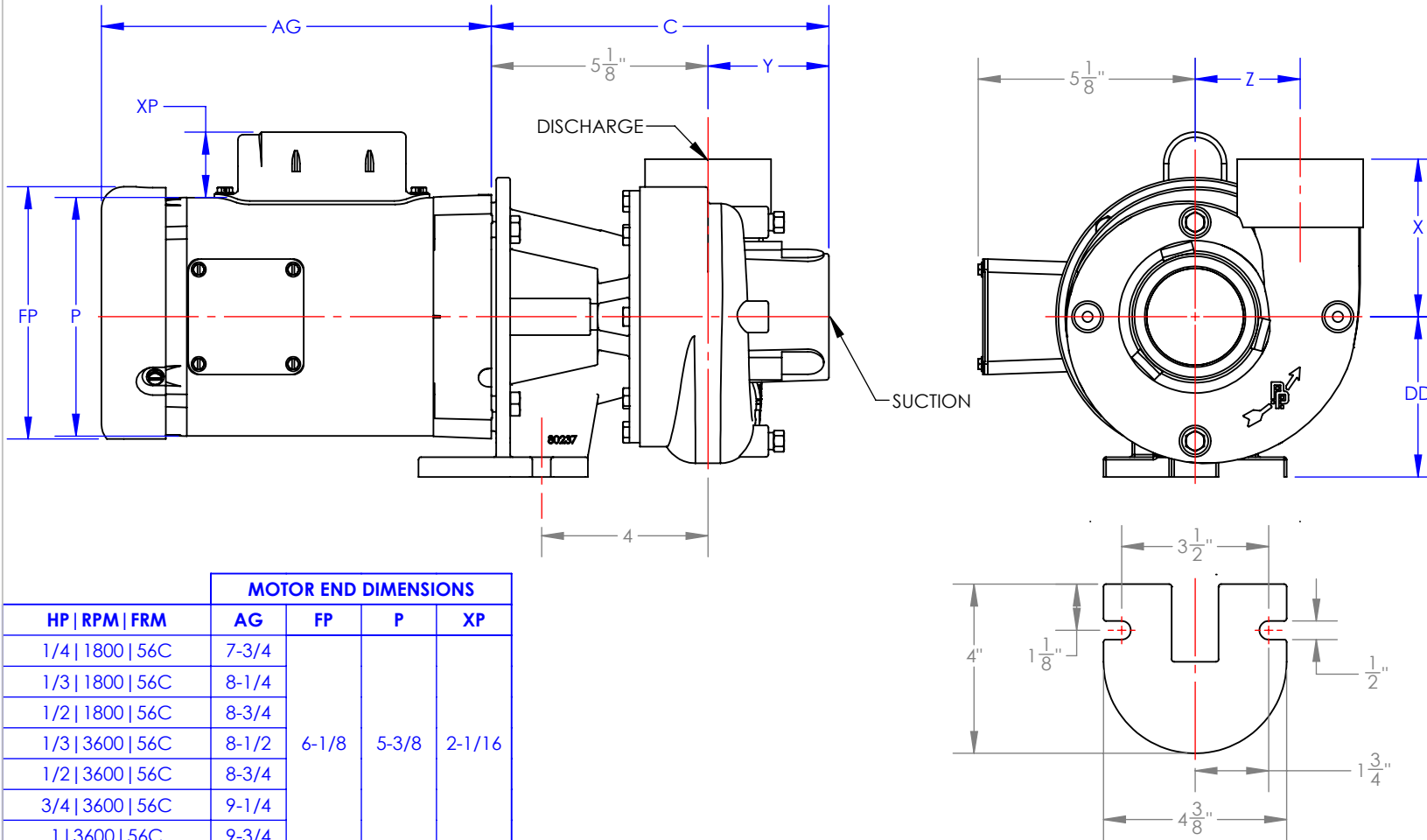
O-RCH

DATE

11/7/24

REV.

D



MOTOR END DIMENSIONS

HP RPM FRM	AG	FP	P	XP
1/4 1800 56C	7-3/4	6-1/8	5-3/8	2-1/16
1/3 1800 56C	8-1/4			
1/2 1800 56C	8-3/4			
1/3 3600 56C	8-1/2			
1/2 3600 56C	8-3/4			
3/4 3600 56C	9-1/4			
1 3600 56C	9-3/4	7-3/16	6-7/8	2-1/4
1-1/2 3600 56C	10-1/2			
2 3600 56C	11-1/8			
3 3600 56C	12-3/8			

PUMP END DIMENSIONS

	C	Y	PW	Z	X	DD	SUCTION	DISCHARGE
RC200	8-1/8	2-7/8	7-1/8	2-1/2	3-3/4	3-1/2	2" NPT	2" NPT
RC300	8-9/16	3-5/16	9-5/8	3-11/16	4-1/2	4-3/8	3" NPT	3" NPT

NOTE:

1. MOTOR DIMS WILL VARY BY MODEL AND MAKE, DIMS ARE TO BE USED FOR REFERENCE ONLY.
2. FOR ENGINEERING PURPOSES, PUMP RC200 HAS BEEN USED TO CREATE DRAWINGS.
3. ALL DIMS HAVE BEEN ROUNDED TO THE NEAREST 1/8 INCH.



PRICE PUMP CO.

FACTORY OUTLINE DRAWING

2203 SMEED PARKWAY
 CALDWELL, ID 83605
 (208) 402-6871